

Write your name here

Surname

Other names

Pearson Edexcel
International GCSE

Centre Number

--	--	--	--	--	--

Candidate Number

--	--	--	--	--	--

Bangladesh Studies

Paper 2: The Land, People and Economy of Bangladesh

Wednesday 17 May 2017 – Morning
Time: 1 hour 30 minutes

Paper Reference

4BN0/02

You do not need any other materials.

Total Marks

Instructions

- Use **black** ink or ball-point pen.
- **Fill in the boxes** at the top of this page with your name, centre number and candidate number.
- Answer **Section A** and then **one** question from Section B, **one** question from Section C and **one** question from Section D.
- Answer the questions in the spaces provided
– *there may be more space than you need.*

Information

- The total mark for this paper is 60.
- The marks for **each** question are shown in brackets
– *use this as a guide as to how much time to spend on each question.*

Advice

- Read each question carefully before you start to answer it.
- Write your answers neatly and in good English.
- Check your answers if you have time at the end.

Turn over ►

P48431A

©2017 Pearson Education Ltd.

1/1/1/1/1/1/1



Pearson

SECTION A

You MUST answer this question.

1 Study Figure 1 which is an outline map of Bangladesh.

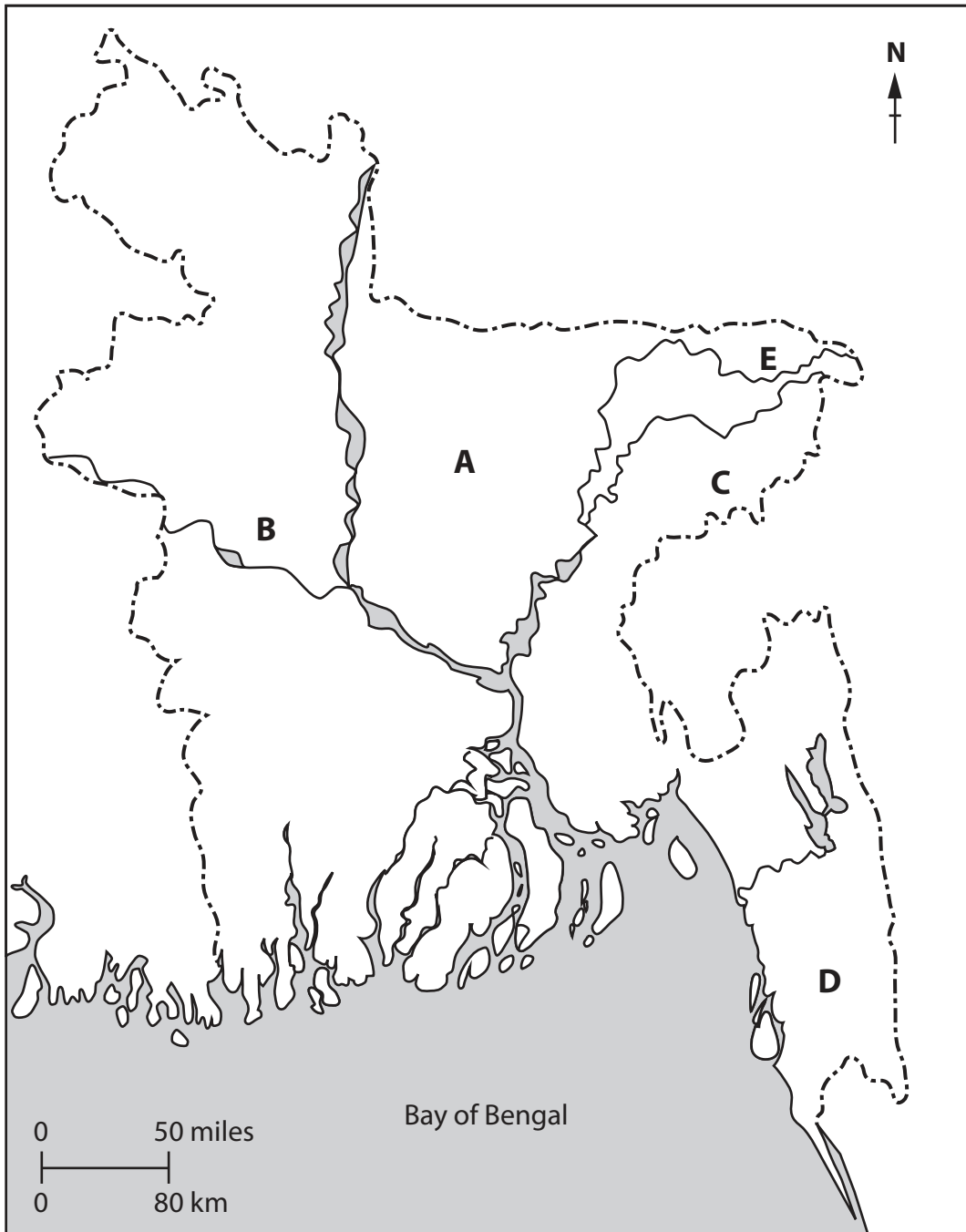


Figure 1

DO NOT WRITE IN THIS AREA

DO NOT WRITE IN THIS AREA

DO NOT WRITE IN THIS AREA



(a) Name the following features on the map:

(i) the upland area at A (1)

(ii) the river at B (1)

(iii) the mineral source at C (1)

(iv) the type of natural vegetation at D (1)

(v) the city at E. (1)

(b) (i) What is meant by the term **natural resource**? (2)

(ii) Give **one** example of a renewable resource found in Bangladesh. (1)



(c) (i) Which mode of transport carries most of Bangladesh's exports? (1)

.....

(ii) Outline the present state of Bangladesh's trade balance. (2)

.....

.....

.....

(d) (i) What is meant by the term a **natural increase in population**? (2)

.....

.....

.....

(ii) Identify **two** disadvantages of living in the rural areas of Bangladesh. (2)

1

.....

2

.....

(Total for Question 1 = 15 marks)

TOTAL FOR SECTION A = 15 MARKS



SECTION B

Answer EITHER Question 2 OR Question 3 in this Section.

If you answer Question 2 put a cross in the box .

2 (a) Study Figure 2 which shows the main energy sources of Bangladesh.

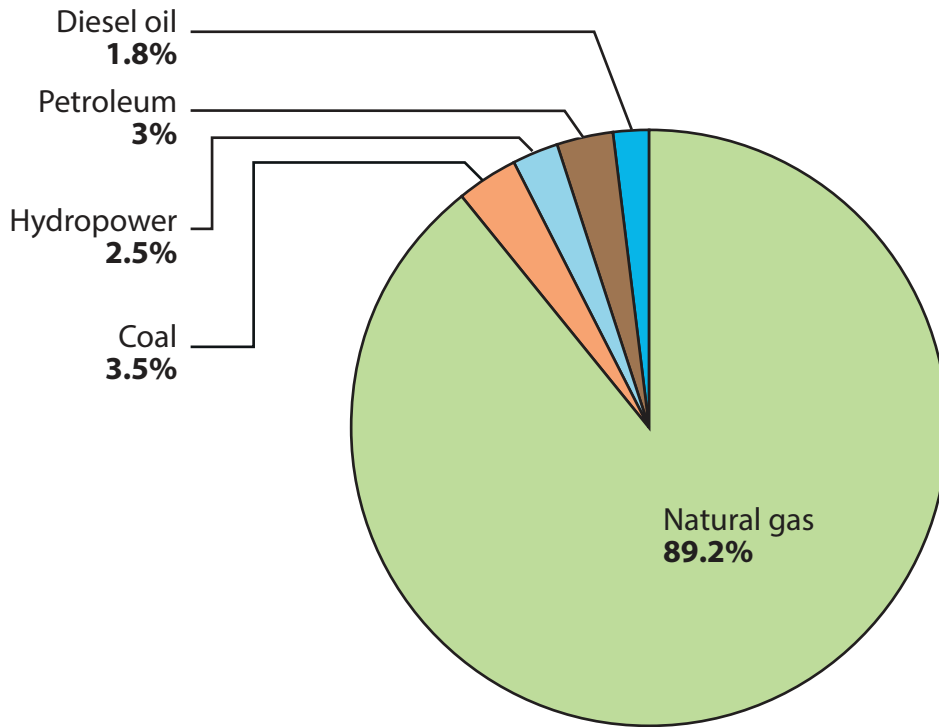


Figure 2

(i) Name **one** area in Bangladesh that produces natural gas.

(1)

(ii) Name the **two** main users of natural gas.

(2)

1

2

(iii) What is meant by the term **hydropower**?

(2)



(b) (i) Suggest **two** advantages of Bangladesh's location.

(2)

1

2

(ii) Suggest **two** disadvantages of Bangladesh's location.

(2)

1

2

(c) Explain why the use of natural resources in Bangladesh requires careful management.

(6)

.....

.....

.....

.....

.....

.....

.....

.....

.....

.....

.....

.....

.....

.....

.....

.....

.....

.....

.....

.....

.....

.....

.....

(Total for Question 2 = 15 marks)



DO NOT WRITE IN THIS AREA

DO NOT WRITE IN THIS AREA

DO NOT WRITE IN THIS AREA

If you answer Question 3 put a cross in the box .

3 (a) Study Figure 3 which shows two different types of flood hazard.

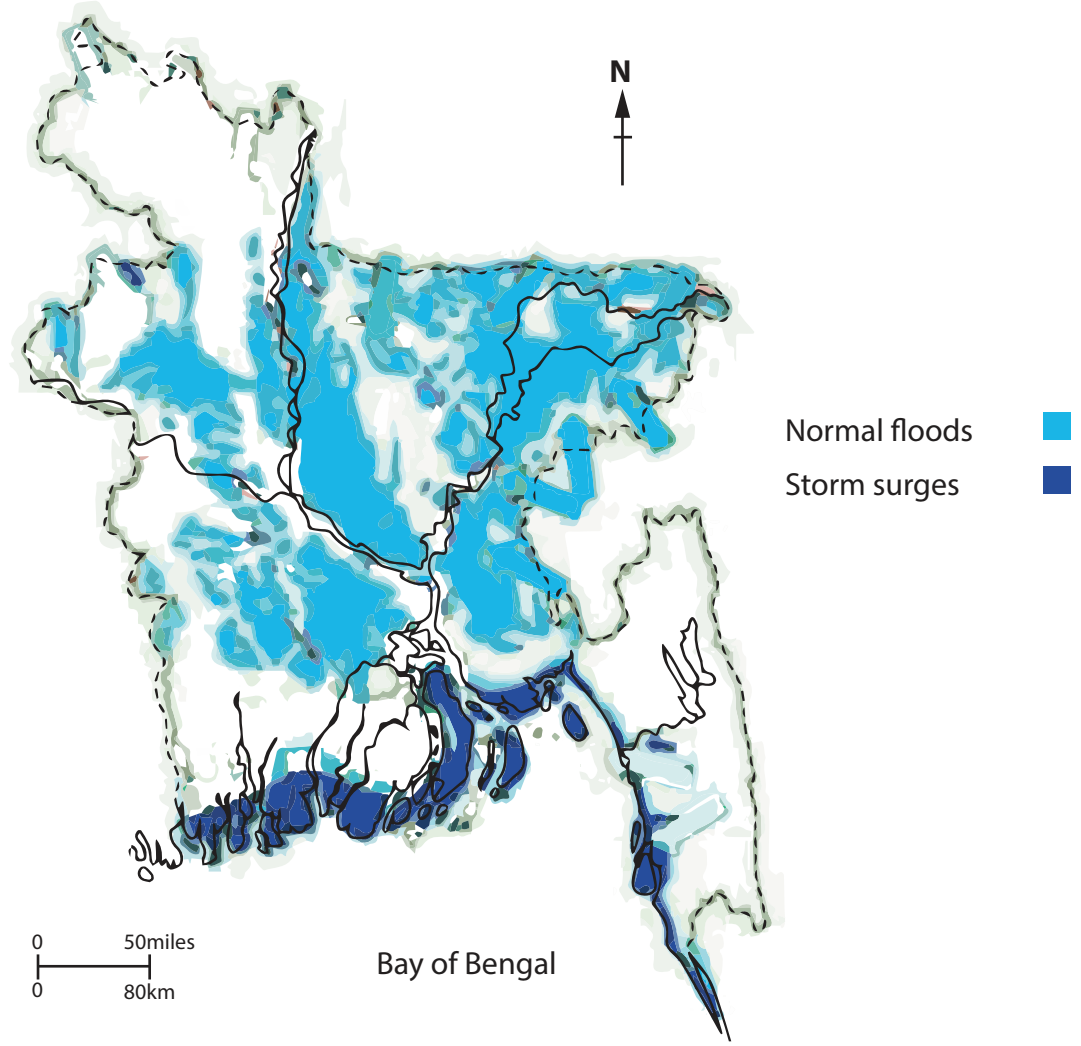


Figure 3

(i) At what time of the year do normal floods usually occur? (1)

(ii) What is meant by the term **flash flood**? (2)

.....

.....

.....

.....

.....



(iii) State **two** effects of flooding.

(2)

1

2

(b) (i) Suggest **two** ways in which Bangladesh may be contributing to global warming.

(2)

1

2

(ii) State **two** possible threats to Bangladesh resulting from global warming.

(2)

1

2

DO NOT WRITE IN THIS AREA

DO NOT WRITE IN THIS AREA

DO NOT WRITE IN THIS AREA



DO NOT WRITE IN THIS AREA

(c) Explain how the damage caused by storm surges or cyclones in Bangladesh might be reduced.

(6)

Dotted lines for writing the answer.

(Total for Question 3 = 15 marks)

TOTAL FOR SECTION B = 15 MARKS



SECTION C

Answer EITHER Question 4 OR Question 5 in this Section.

If you answer Question 4 put a cross in the box .

- 4 (a) Study Figure 4 which shows that the United Nations believed Dhaka would be one of the fastest growing megacities in the world between 2005 and 2015.

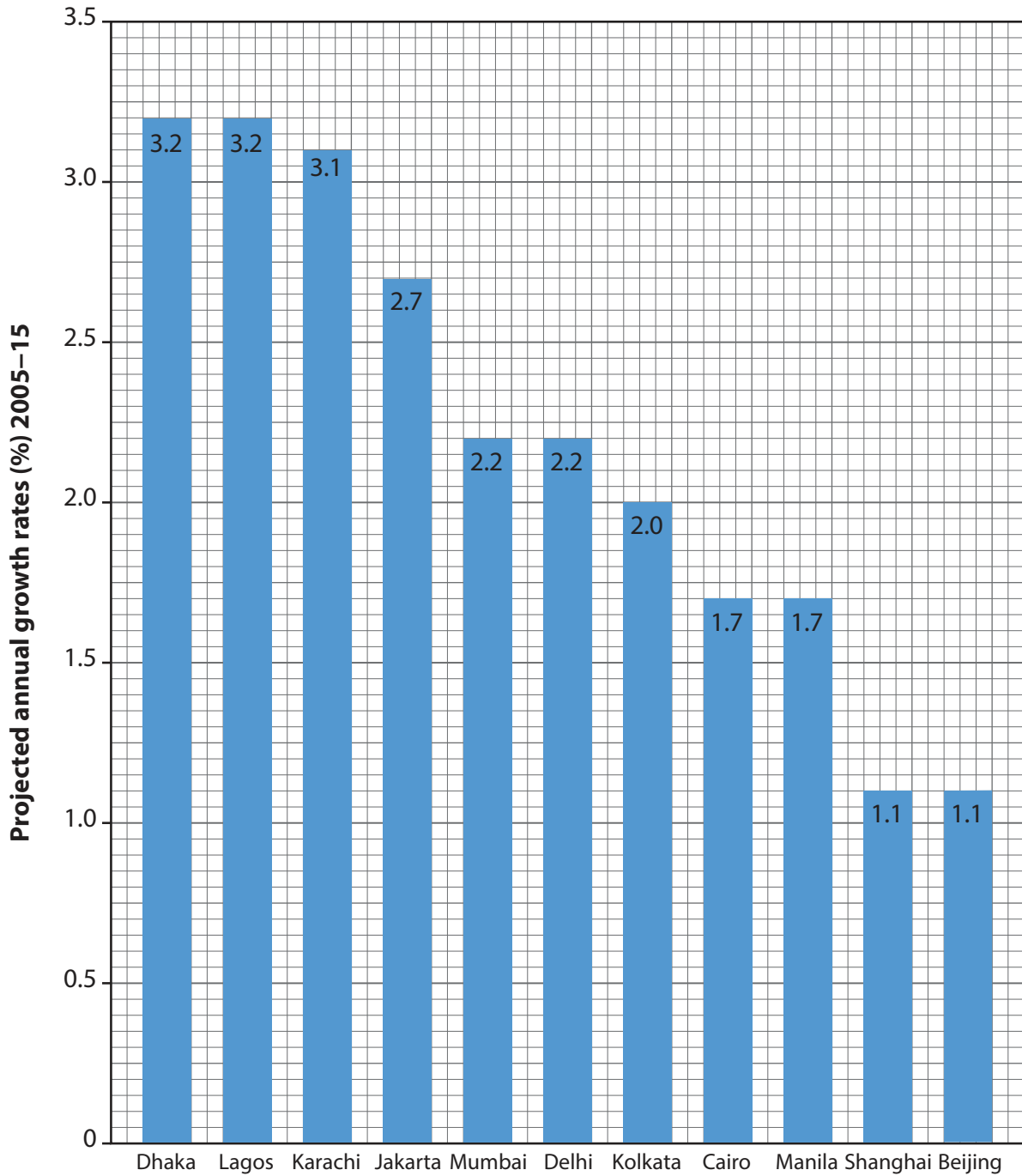


Figure 4

DO NOT WRITE IN THIS AREA

DO NOT WRITE IN THIS AREA

DO NOT WRITE IN THIS AREA



(i) In which continent are most of the world's fastest growing megacities located?

(1)

(ii) State **two** reasons for Dhaka's fast growth.

(2)

1

2

(iii) Which is the second largest city in Bangladesh?

(1)

(b) (i) What is meant by the term **infant mortality**?

(2)

(ii) Suggest reasons why the infant mortality rate in Bangladesh is falling.

(3)

DO NOT WRITE IN THIS AREA

DO NOT WRITE IN THIS AREA

DO NOT WRITE IN THIS AREA



P 4 8 4 3 1 A 0 1 1 2 4

(c) Describe the problems caused by the rapid growth of cities such as Dhaka.

(6)

Dotted lines for writing the answer.

(Total for Question 4 = 15 marks)

DO NOT WRITE IN THIS AREA

DO NOT WRITE IN THIS AREA

DO NOT WRITE IN THIS AREA



If you answer Question 5 put a cross in the box .

- 5 (a) Study Figure 5 which shows the poverty rate (percentage of population suffering from poverty) in Bangladesh between 1996 and 2013.

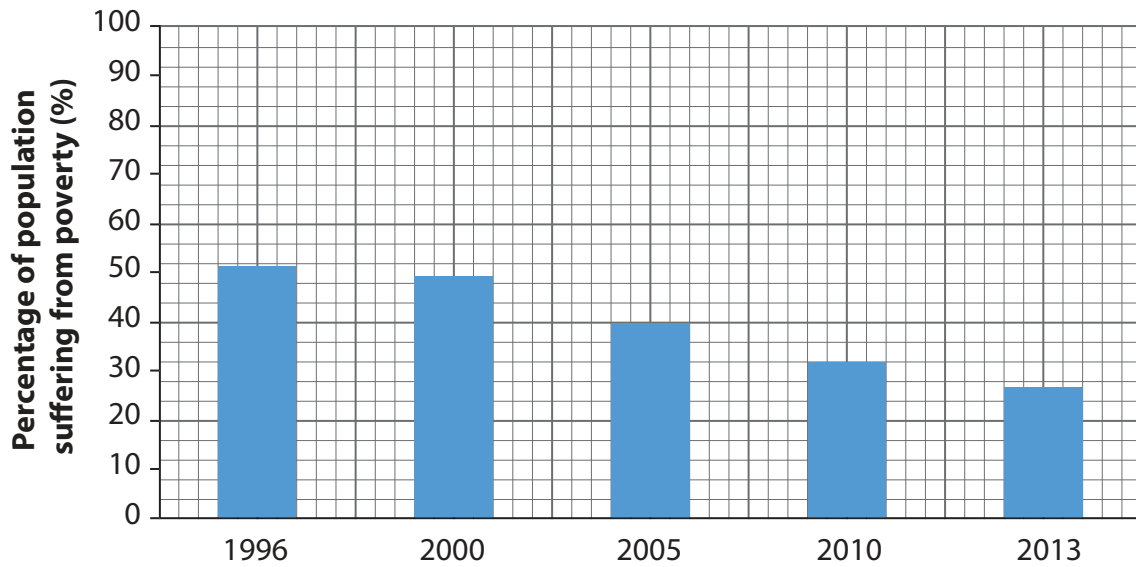


Figure 5

- (i) What was the poverty rate in 2005?

(1)

- (ii) State **two** reasons for the decline in the poverty rate.

(2)

1

2

- (iii) State **one** way of measuring poverty.

(1)



DO NOT WRITE IN THIS AREA

DO NOT WRITE IN THIS AREA

DO NOT WRITE IN THIS AREA

(b) (i) Describe the main migration movement of people within Bangladesh.

(2)

.....

.....

.....

.....

(ii) Explain why Bangladeshi people migrate to other countries.

(3)

.....

.....

.....

.....

.....

.....

.....



DO NOT WRITE IN THIS AREA

DO NOT WRITE IN THIS AREA

DO NOT WRITE IN THIS AREA

(c) Describe the problems caused by social inequalities in Bangladesh.

(6)

Area with horizontal dotted lines for writing the answer to question 5(c).

(Total for Question 5 = 15 marks)

TOTAL FOR SECTION C = 15 MARKS



P 4 8 4 3 1 A 0 1 5 2 4

SECTION D

Answer EITHER Question 6 OR Question 7 in this Section.

If you answer Question 6 put a cross in the box .

6 (a) Study Figure 6 which shows the distribution of crops and forests in Bangladesh.

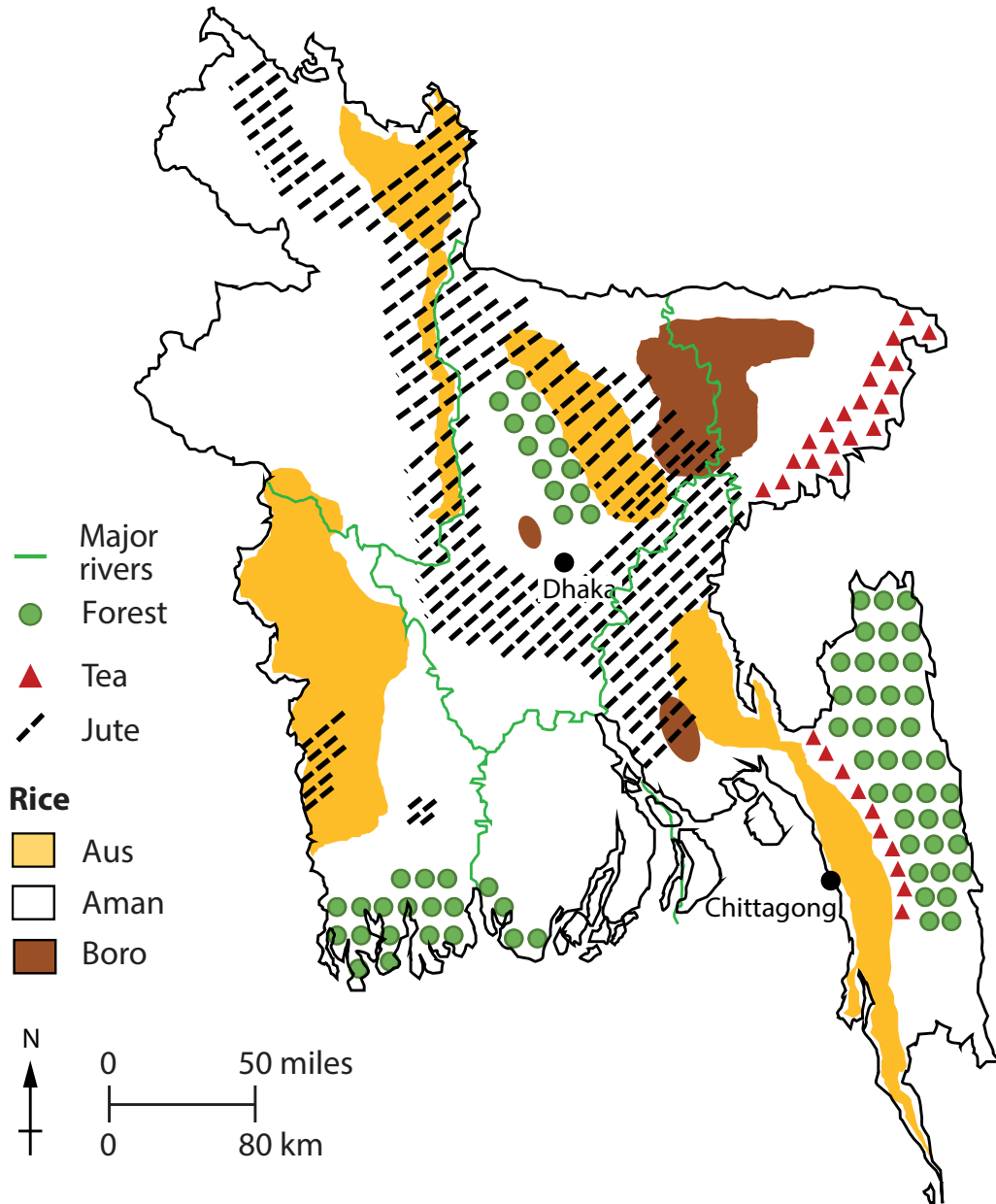


Figure 6

DO NOT WRITE IN THIS AREA

DO NOT WRITE IN THIS AREA

DO NOT WRITE IN THIS AREA



(i) Which type of rice crop covers the smallest area?

(1)

(ii) Describe where jute is grown.

(2)

(iii) Suggest why forests are the main type of vegetation in the southeast of Bangladesh.

(2)

(b) (i) What is meant by the **tertiary sector**?

(2)

(ii) State **two** reasons why the informal sub-sector is important.

(2)

1

2

DO NOT WRITE IN THIS AREA

DO NOT WRITE IN THIS AREA

DO NOT WRITE IN THIS AREA



P 4 8 4 3 1 A 0 1 7 2 4

(c) Explain the problems associated with irrigation in Bangladesh.

(6)

.....

.....

.....

.....

.....

.....

.....

.....

.....

.....

.....

.....

.....

.....

.....

.....

.....

.....

.....

.....

.....

.....

.....

(Total for Question 6 = 15 marks)

DO NOT WRITE IN THIS AREA

DO NOT WRITE IN THIS AREA

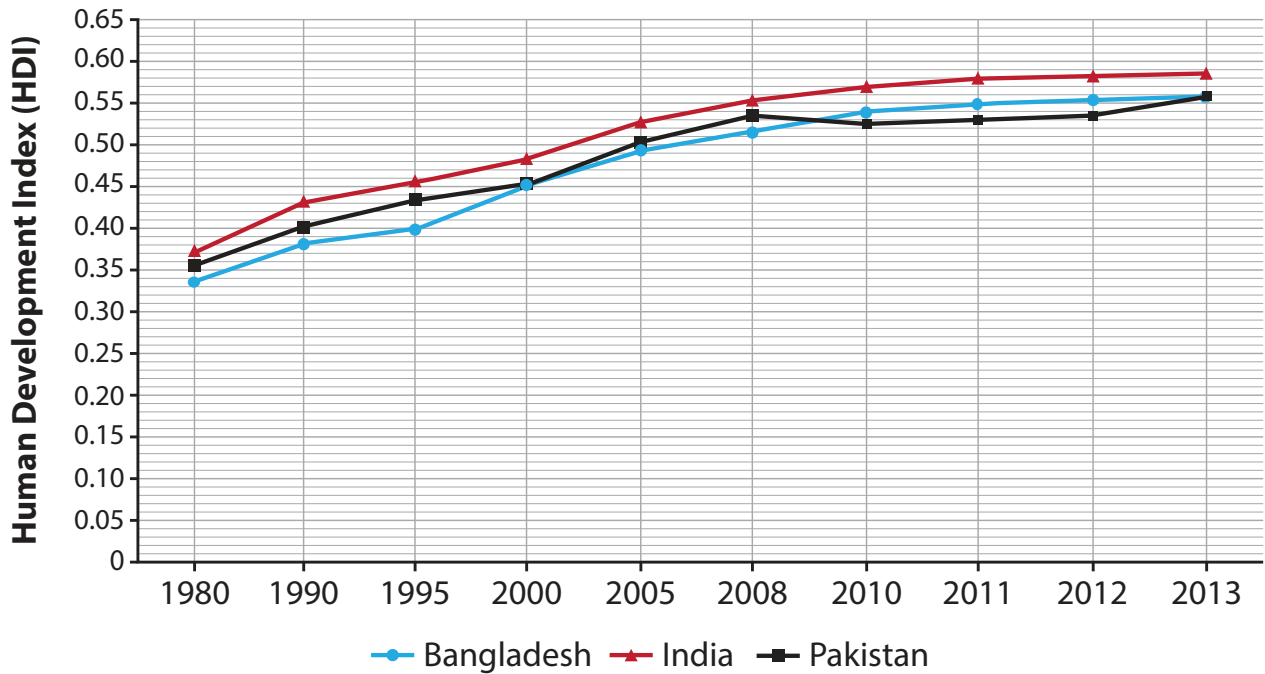
DO NOT WRITE IN THIS AREA



If you answer Question 7 put a cross in the box .

- 7 (a) Study Figure 7 which compares the development of Bangladesh with that of India and Pakistan between 1980 and 2013.

Figure 7



- (i) What was the value of Bangladesh's Human Development Index (HDI) in 1995?

(1)

- (ii) How did Bangladesh's HDI in 1980 compare with that of India in 1980?

(1)

- (iii) How did Bangladesh's HDI in 2013 compare with that of Pakistan in 2013?

(1)



(iv) The HDI is one way of measuring development. State **two** other ways.

(2)

1

.....

2

.....

(b) (i) What is meant by the term **per capita income**?

(2)

.....

.....

.....

(ii) State **two** reasons why manufacturing is mainly concentrated in the cities of Bangladesh.

(2)

1

2

DO NOT WRITE IN THIS AREA

DO NOT WRITE IN THIS AREA

DO NOT WRITE IN THIS AREA



DO NOT WRITE IN THIS AREA

DO NOT WRITE IN THIS AREA

DO NOT WRITE IN THIS AREA

(c) Explain the impacts of manufacturing industries on the environment of Bangladesh.

(6)

.....

.....

.....

.....

.....

.....

.....

.....

.....

.....

.....

.....

.....

(Total for Question 7 = 15 marks)

TOTAL FOR SECTION D = 15 MARKS
TOTAL FOR PAPER = 60 MARKS



DO NOT WRITE IN THIS AREA

DO NOT WRITE IN THIS AREA

DO NOT WRITE IN THIS AREA

BLANK PAGE



DO NOT WRITE IN THIS AREA

DO NOT WRITE IN THIS AREA

DO NOT WRITE IN THIS AREA

BLANK PAGE



P 4 8 4 3 1 A 0 2 3 2 4

DO NOT WRITE IN THIS AREA

DO NOT WRITE IN THIS AREA

DO NOT WRITE IN THIS AREA

BLANK PAGE

